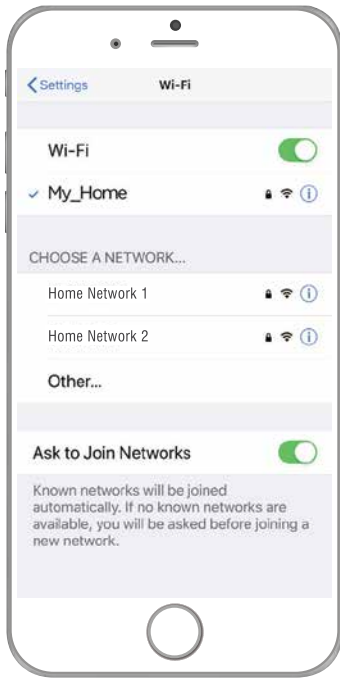


CONNECT TO YOUR HOME WIFI AND PAIR WITH YOUR DIY SMART CANNES DOUBLE PLUG – 21883/05.



BEFORE YOU BEGIN PLEASE DOWNLOAD AND REGISTER THE BRILLIANTSMART APP.

For help or assistance go to www.brilliantsmart.com.au




Your smart plug will make any appliance, lamp, iron, fan, etc – anything you plug in – smart. Turn on and off remotely, use voice control or schedule using the BrilliantSmart App on your smart phone.

Enable your WiFi network on you mobile device making sure to select 2.4GHz frequency network if your home network supports dual band frequencies. i.e. 2.4GHz or 5GHz.

It's important that you connect to 2.4GHz Frequency. Please disable or unselect the 5GHz Frequency in home WiFi network if able. This can be reselected or enabled once the smart devices have been paired to the BrilliantSmart app.

Note: if you are not familiar with this procedure you may need to contact your internet service provider for some assistance.

 Before installation of your BrilliantSmart device (in the location you desire) please check the WiFi signal is at least 2 bars strength on your mobile device WiFi icon.

If a poor WiFi signal, upgrading your router, installing an AP(Access Point) or adding a WiFi Extender may be needed (sold separately).



INSTALLATION

1. Plug into any standard 3-pin power socket.
2. Can be wall mounted.
3. Indoor use only.
4. Please dispose of this packaging material thoughtfully. Also, please dispose of this product thoughtfully once it has passed its useful life. When your smart device comes to the end of its life or you choose to update or upgrade it, please do not dispose of it with your normal household waste. Please recycle where facilities exist. When disposing of this fitting, check with your local authority for suitable options.

TECHNICAL SPECIFICATIONS

Model No: 21883/05

Dimensions: 117 x 43 x 39.1mm

Working Voltage: 220V–240VAC, 50Hz

Support Max Power: 10A, 2400W

Standby Power: <0.9W

USB Charger: (Type A, Type C) 5V, 2000mA (total)

Security: Mac Encryption;WEP/WAPI/TKIP/AES

WiFi Standard: IEEE802.11/b/g/n

System Req's: iOS 8.0 or higher, Android 4.1 or higher.

Warranty: 1 Year

Included in the box: Smart WiFi Canses double adaptor & installation manual x 1

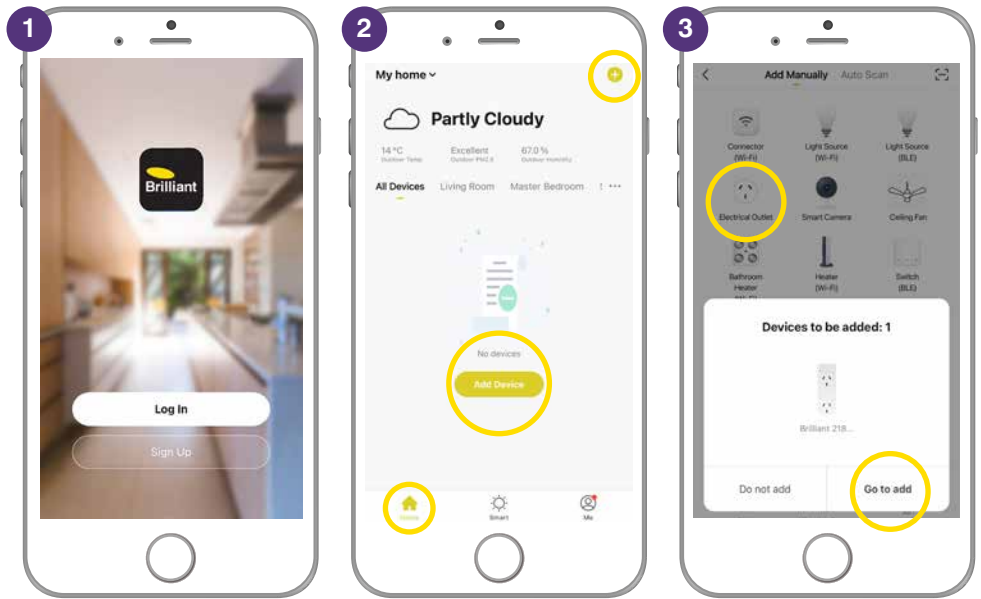
FEATURES

Power sockets/outlets	2
USB-A	1
USB-C	1
Thermal overload protection	No
Surge protection	No
Main overall power control	Yes only App
Individual power socket control	Yes by App
Child lock	Yes by App

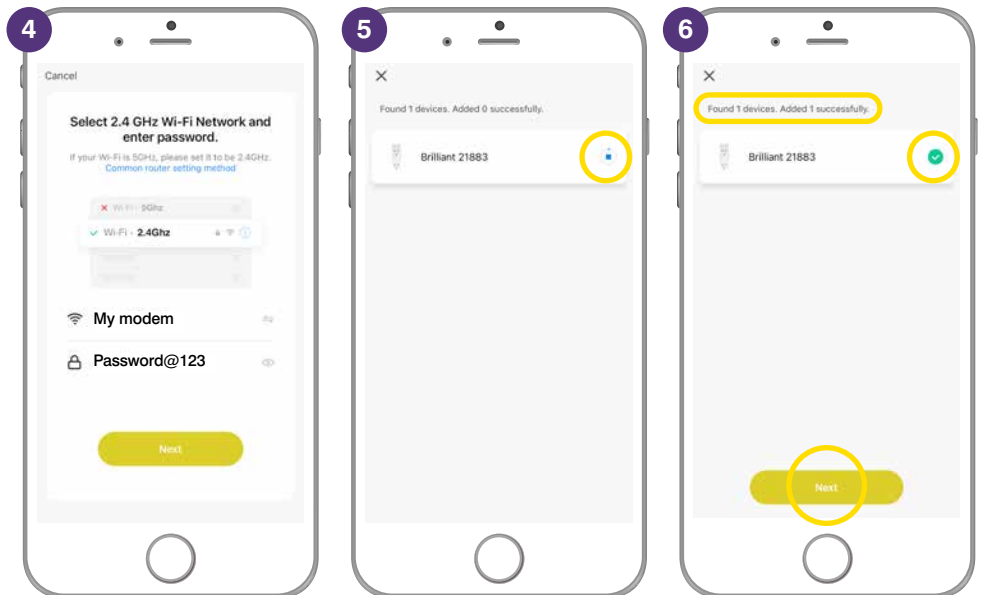
BRILLIANTSMART APP – CANNES DOUBLE PLUG – START UP

On power-on of the double plug the LED BLUE indicator light will blink rapidly. It is ready for pairing to the BrilliantSmart App.
If the device is not blinking rapidly (2 blinks per second), press and hold for 5 secs.

1. Open the BrilliantSmart App that you've previously registered and setup.
2. Press the home screen. If you are connecting a smart device for the first time – press **'Add Device'** or if you are adding another smart device – press the plus sign '+'.
 3. Next select the type of device you wish to add. If you're connecting a Smart double plug, tap **'Electrical Outlet'** OR if the app automatically selects for you. Press **'Go to add'**.
Icons may differ depending on your phone, tablet or operating system.

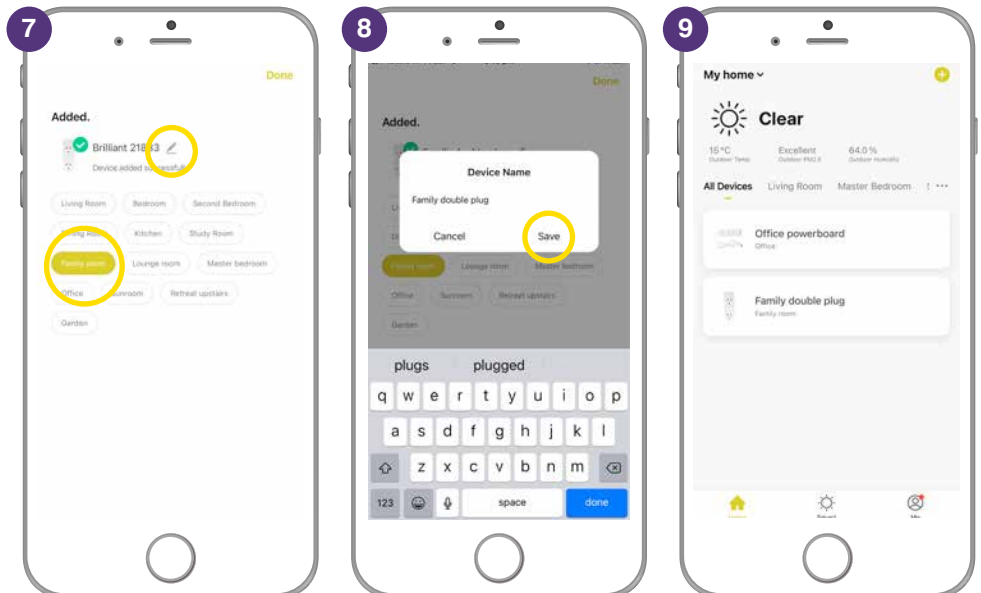


4. Select your 2.4GHz network on your home modem and enter your password.
Note: for first time users you may need to search for your 2.4GHz network and add your password. Once your device is paired, the BrilliantSmart app will save this information so you don't need to re-enter each time a device is added.
 This is private and confidential with no access from third parties.



5. The BrilliantSmart app will search and find any smart devices in pairing mode. Wait for the app to connect your smart device.

6. Once connected you'll get a **'tick'** and message to show your device has successfully connected – press **'Next'**.



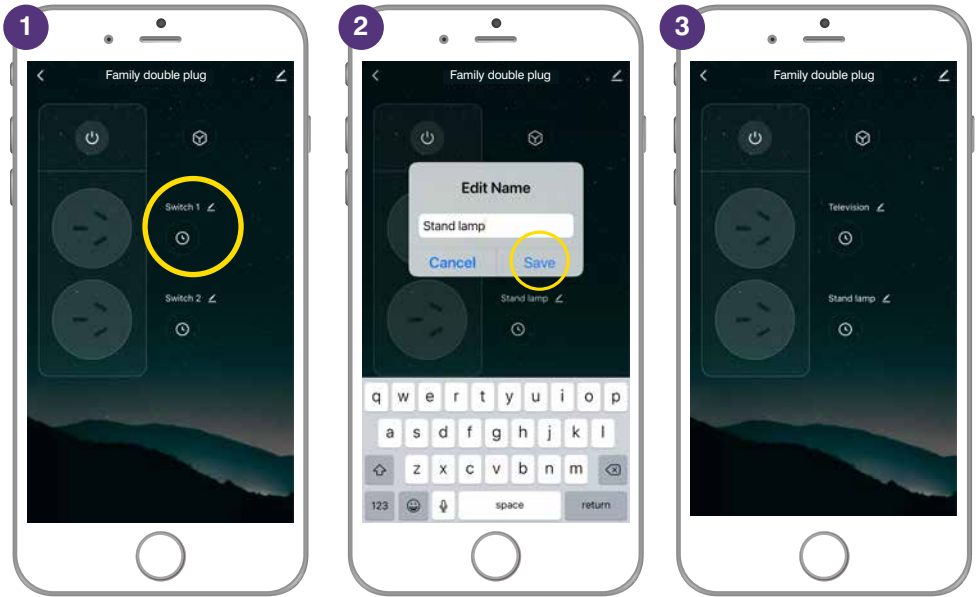
7. Select the room your device is to be located.
8. Select the pen to change the name of your smart device. Type in the device name and press **'Save'**.
9. The smart device can now be controlled by the BrilliantSmart app.

BRILLIANTSMART APP – BASIC OPERATING STEPS

Once your smart device is connected and setup use these steps to control your smart device.

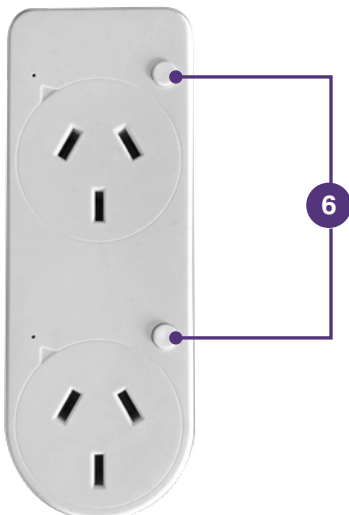
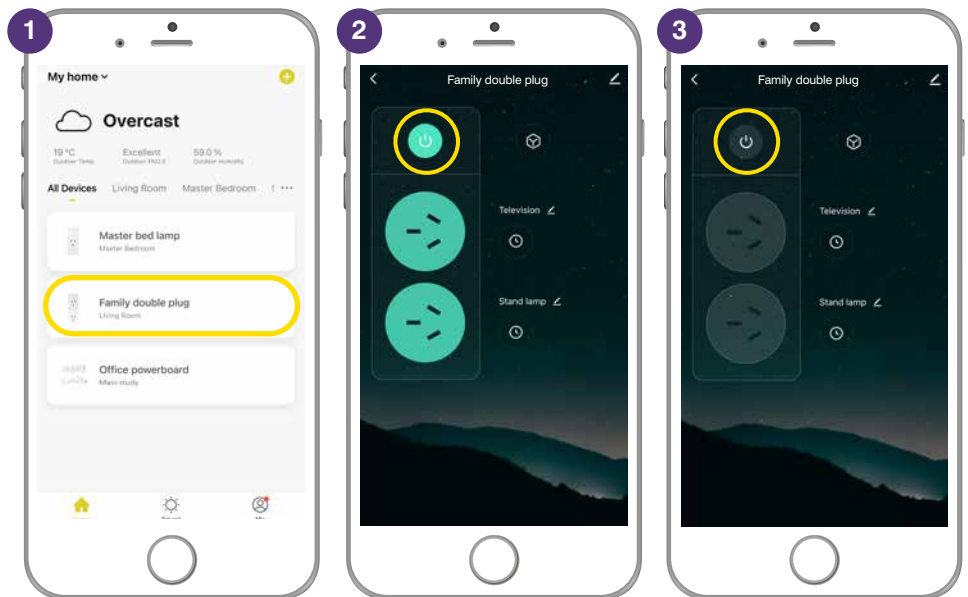
RENAMING EACH SWITCH

1. Select 'Switch 1'. Select the pen to change the name of the switch.
2. Type in the name of device plugged into Switch 1. Press 'Save'.
3. Repeat steps 1 & 2 to rename Switch 2 and Switch 3.



POWER ON & OFF

1. Select the plug you want to control.
2. Press the power button icon to power ON BOTH sockets.
3. Press the power button to turn OFF BOTH sockets.
4. Press the socket icon to turn ON each individual socket.
5. Press the socket icon to turn OFF each individual socket.
6. You can also turn your smart device ON/OFF manually by pressing the power button located on the smart plug.

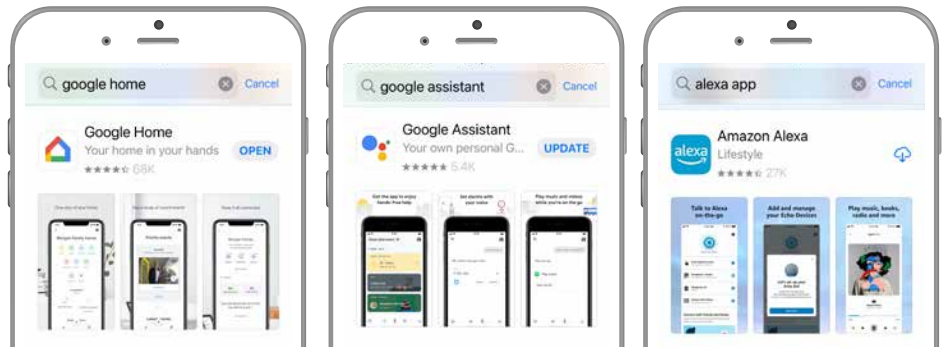


BRILLIANTSMART APP – VOICE CONTROL

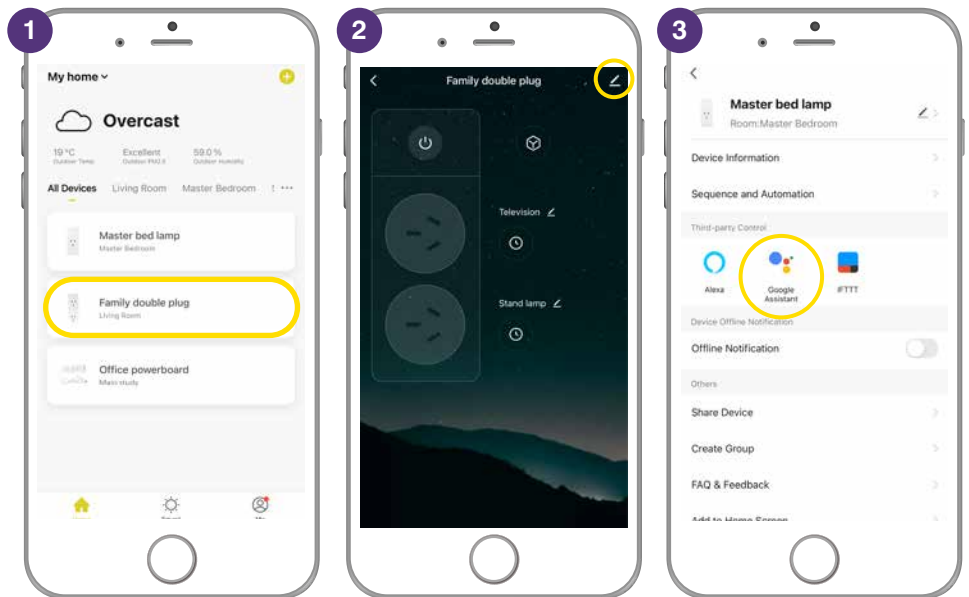
We suggest you name your power sockets/outlets so you can easily see what appliance or device is plugged into the socket, eg: lounge lamp, iron, christmas lights, etc. Naming will assist with voice control.

Once you have your Google or Amazon Alexa plugged in and setup, download the App – Google Home, Google Assistant or Amazon Alexa – from Google Play or Apple App Store.

Follow the on-line instructions to connect and setup your Google or Alexa devices.



1. To connect your BrilliantSmart Device to Google or Amazon – select the device to connect.
2. Press the 'pen icon'.
3. Select either Google Assistant or Alexa.
4. The BrilliantSmart App will search for your Google or Alexa device – press instructions on the App.
5. Read through the instructions and following the prompts to connect.



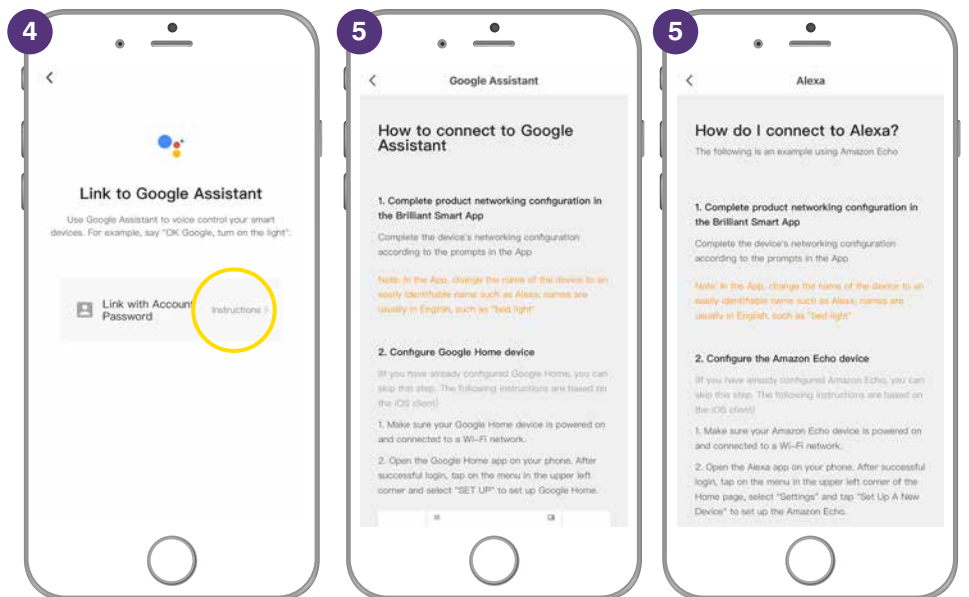
Once connected you can use voice controls such as:

Hey Google

“Turn on christmas lights”

“Turn off stand lamp”

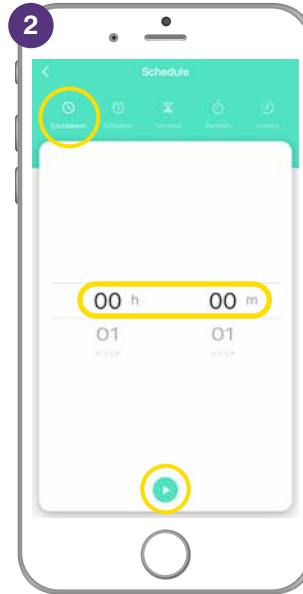
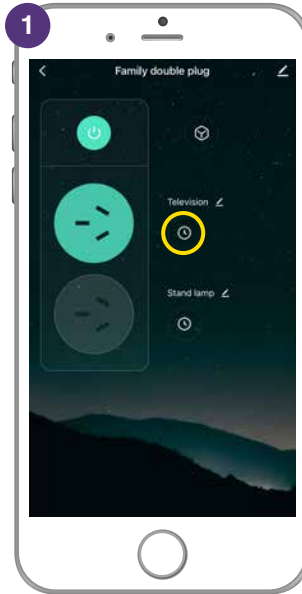
“Turn off television”



COUNTDOWN

Ideal for if you want to have the television turn off automatically after an allotted time.

1. Select the **clock icon** for the device you want to automate.
2. Select **'Countdown'** then set the time for your device to start if turned off or stop if turned on. Press the **'start icon'**.
3. Timer counts down automatically
Press the **bin icon** to stop the timer.
4. Power is OFF.



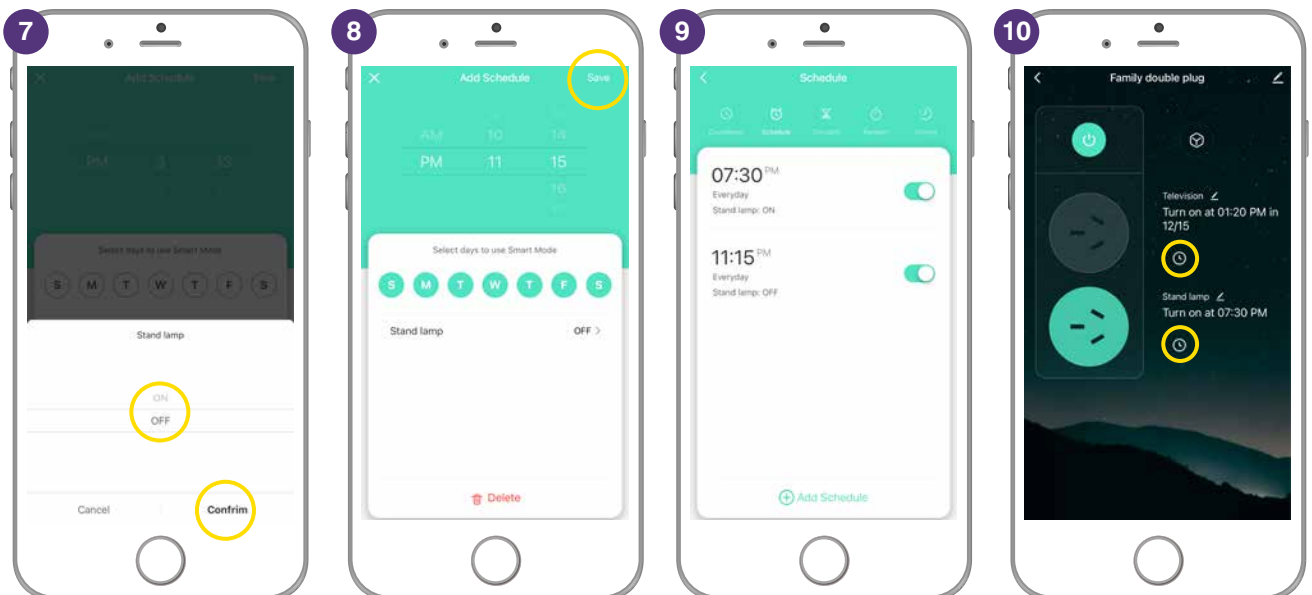
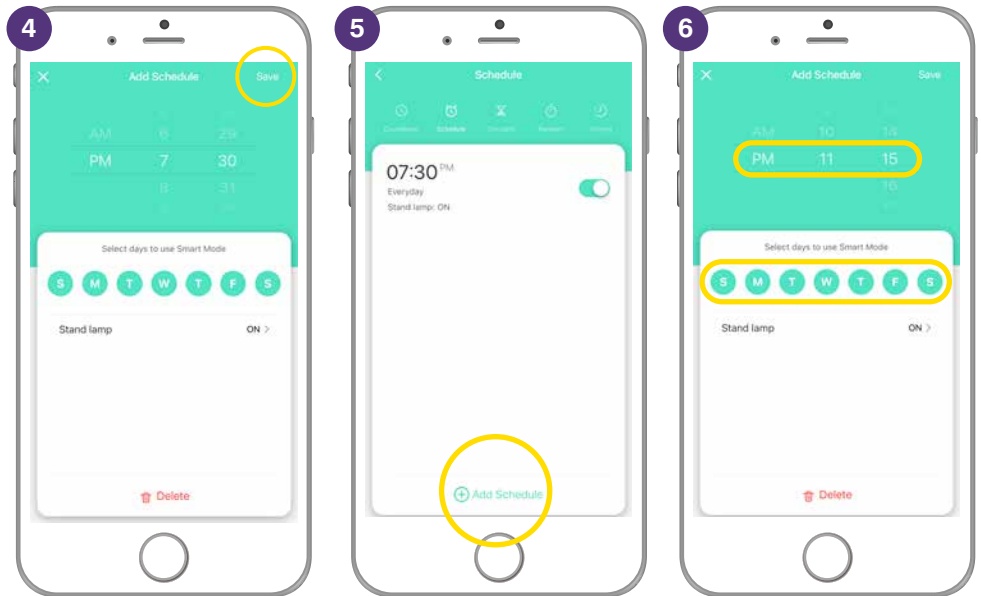
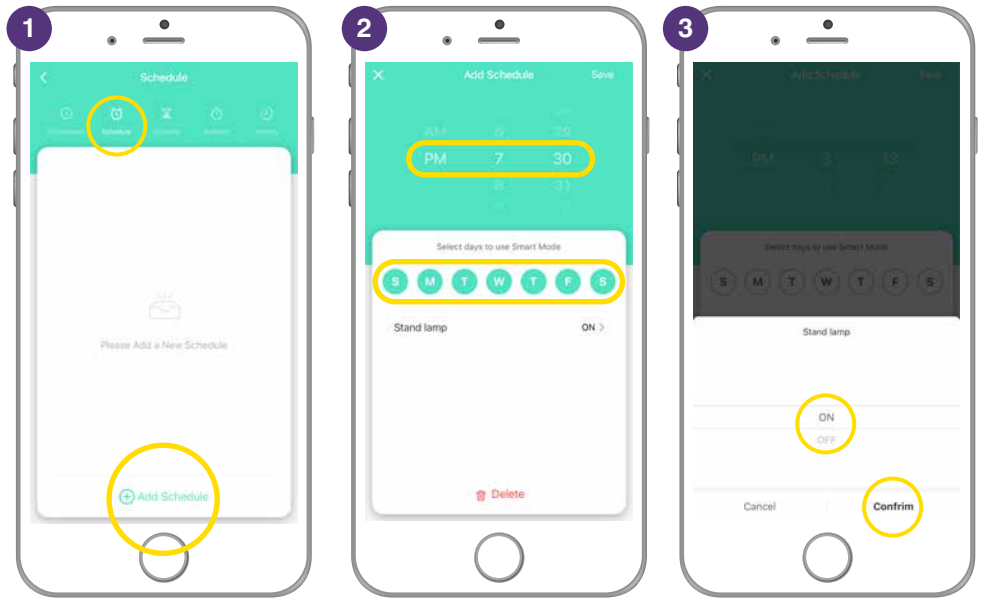
Repeat for above steps for the other smart socket/device.



SCHEDULE

Never come home to a dark house. Scheduling allows you to schedule what time and days you want your device to automatically turn on & off.

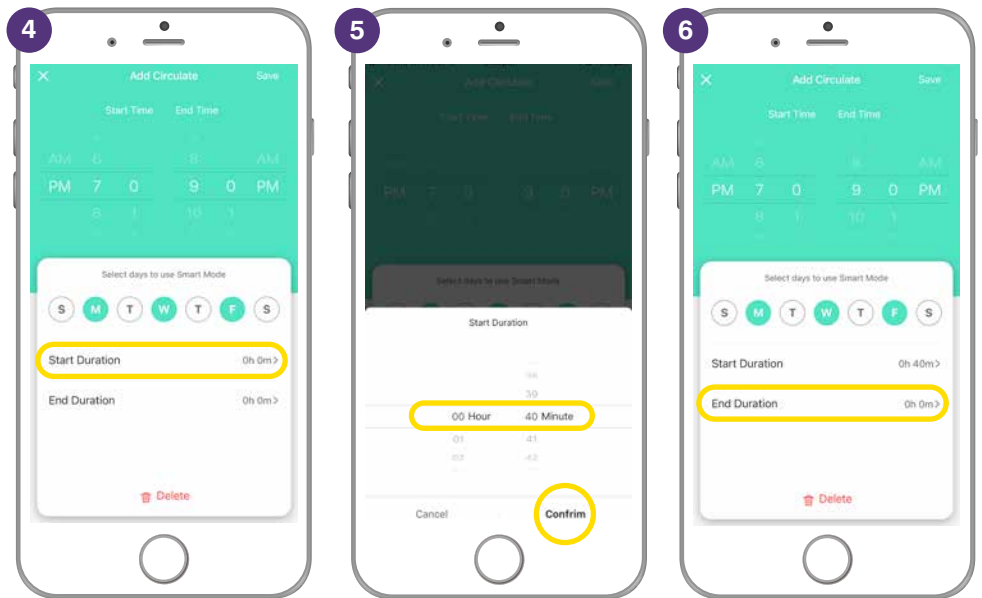
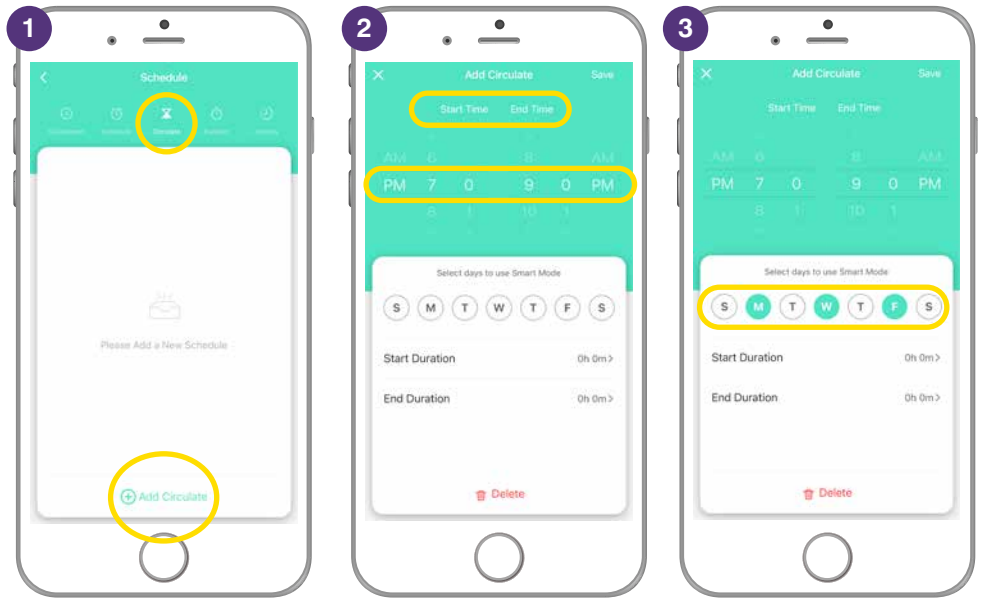
1. Select the 'clock icon'.
2. To set a schedule to automatically turn ON your device, select **Schedule**. Press '+ Add Schedule'.
3. Select the time and days you want your device to turn ON.
4. Ensure the setting **ON** is selected. Press 'Confirm' then 'Save'.
5. To set a schedule to automatically turn OFF your device, select **Schedule**. Press '+ Add Schedule'.
6. Select the time and days you want your device to turn OFF.
7. Ensure the setting **OFF** is selected. Press 'Confirm' then 'Save'.
8. Ensure the setting **OFF** is selected. Press 'Confirm' then 'Save'.
9. Repeat these steps to turn your devices on & off on different days.
10. You can edit your schedules at any time. Just select the clock icon and change the scheduled times and dates, then 'Confirm' & 'Save'.



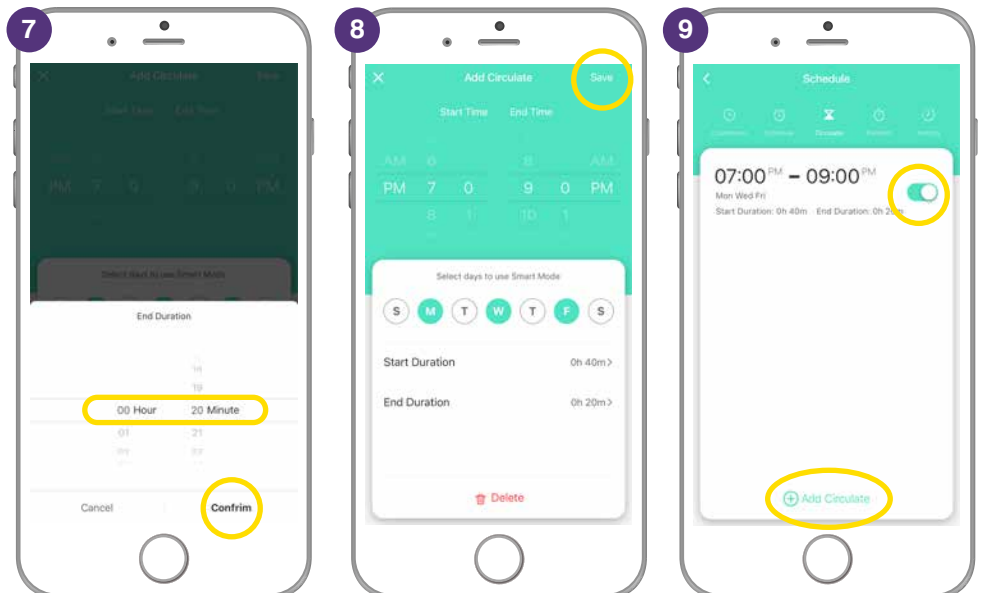
CIRCULATE

Puts your smart device into automatic state. It allows you to set a schedule that automatically turns ON and OFF for the desired amount of time.
 For example: set circulate for an 2 hour period on specific days and have the plug turn on for 40 minutes, then turn off for 20 minutes, then on for 20 minutes, then off for 20 minutes.

1. Select the **Clock icon**, then select at the top '**Circulate**'. Press '**+ Add Circulate**'.
2. Select the time period to automate.
3. Then the select the days to automate.
4. Select the **Start Duration**.
5. This is how long the device will turn ON.
6. Select the **End Duration**.
7. This is how long the device will turn OFF.
8. Select '**Save**'.
9. You can disable by sliding to the left or add more days and times to automate your smart device.



Please note: you will need to disable 'Inching' or 'Random' scheduling – these cannot run at the same time as 'Circulate'.



RANDOM

Have your smart device turn ON and OFF at random times on specific days so when you are on holidays it gives the impression someone is home randomly turning lights, appliances, etc on and off at various times.

1. Select the **Clock icon**, then select at the top '**Random**'. Press '+ Add Random'.
2. Select the time of the time period to automate.
3. Then the select the days to automate. Press '**Save**'.
4. Repeat these steps to add more days and times to automate your smart device.
5. You can disable or turn off Random by sliding to the left.

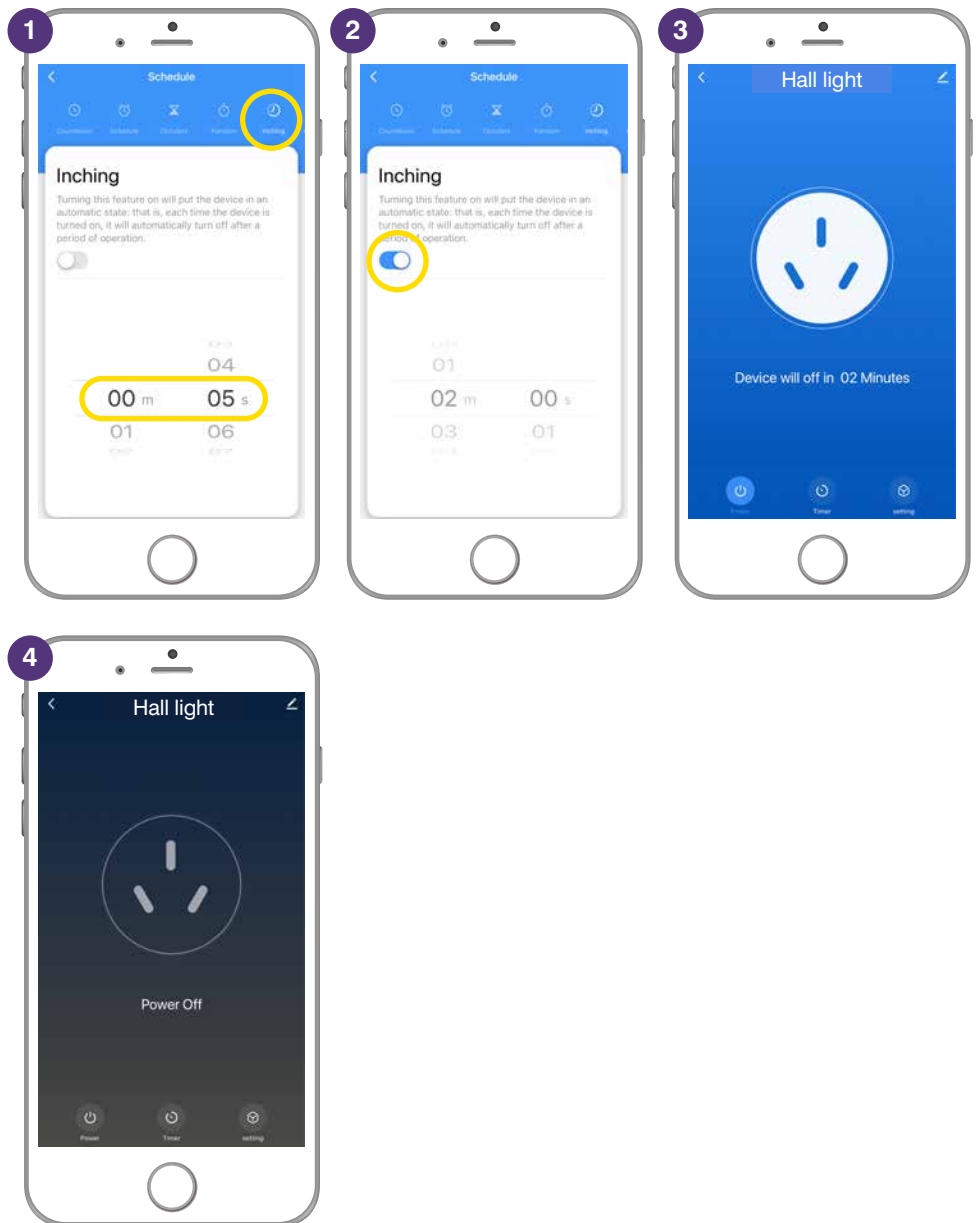
Please note: you will need to disable 'Inching' or 'Circulate' scheduling – these cannot run at the same time as 'Random'.



Ideal for hall lights, lights or a device that you only need to stay on for a specific time. You don't have to turn the device off manually – they turn off automatically without having to set up schedules.

INCHING

1. Scroll to the time required.
This is the specified time you want your smart device to stay on before turning off automatically – eg: Every time the smart light or smart device is turned on it will automatically turn off after it has been on for the time selected – eg: 2 minutes.
2. Slide to on.
3. The smart device will turn off after being on for 2 minutes.
4. Smart device turns off every time after selected time.



BRILLIANTSMART APP – SETTINGS

1. Select 'Settings'.

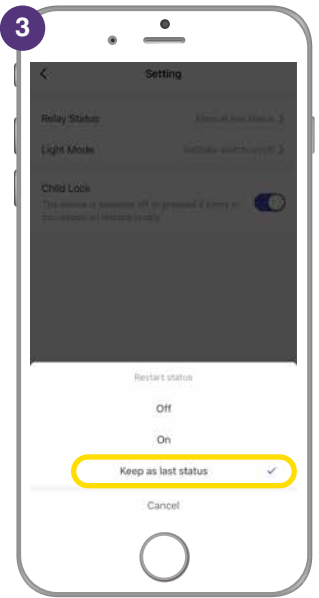
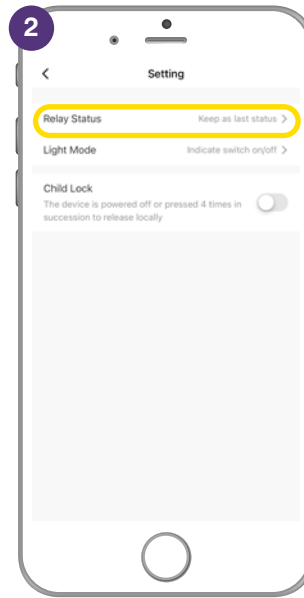
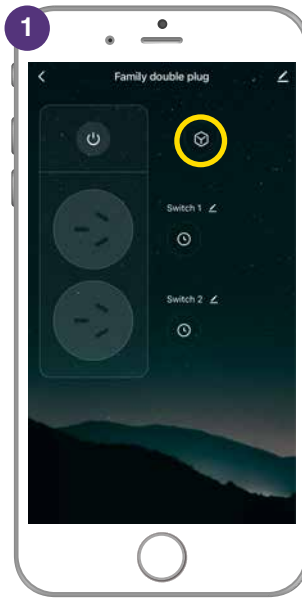
2. Select 'Relay Status'.

Off – if there's a power outage then smart device stays OFF when power is turned back on.

On – if there's a power outage then smart device stays ON when power is turned back on.

Keep as last status – if there's a power outage then the smart device will return to the last setting – eg: device ON then with power renewed, device will be ON again.

3. Select the required option, tick appears then app returns to settings.

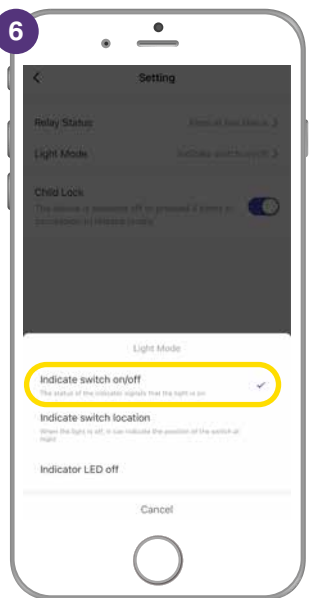
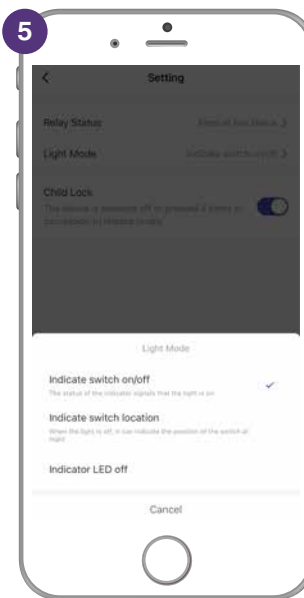
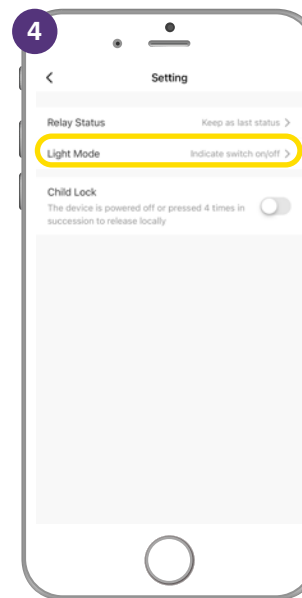


4. Select 'Light Mode'.

5. Indicator switch on/off – shows the status of the light on the app.

On the double smart plug the:
 – indicator light is RED when ON
 – indicator light is BLUE when OFF

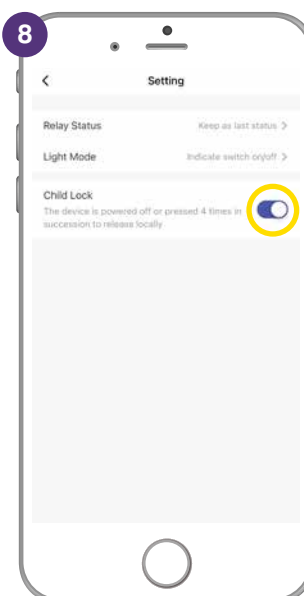
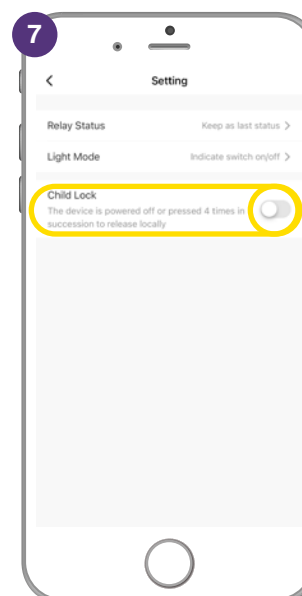
6. Indicator switch location – when the light is off, it can indicate the position of the switch at night.



7. Slide 'Child Lock' to on position.

8. This locks the double plug to either on/off position. The power sockets/outlets and USB ports cannot be turned on/off until lock on app is turned off or released manually.

To release manually – press the power ON button 4 times then you can turn it on.
 OR on the App just slide the Child Lock into the off position.



TROUBLESHOOTING

Problem:

LED indicator light not on or device not powering up.

Possible Cause	Suggested Solution
A. Fuse or circuit breaker has blown.	A. Check main and branch circuit breakers.
B. Loose wire connections to the unit.	B. Check all wire connections to the unit are secure & firmly attached and/or plugs are firmly into the power socket.

Problem:

Indicator light is flashing or device is offline.

Possible Cause	Suggested Solution
A. Device lost internet connection and unable to go back online.	A. Restart device.

Problem:

Unable to pair the device with the BrilliantSmart app.

Possible Cause	Suggested Solution
A. Device not in pairing mode.	A. Press and hold reset switch for 10 seconds until device LED indicator turns red and starts blinking. (Supplied reset pin may need to be used for models with internal reset switch).
B. No Internet access.	B. Ensure WiFi network is working and able to access internet connection. Refresh the WiFi modem by switching the power OFF then ON. If problem still persists, please contact your internet service provider.
C. Dual WiFi network modem.	C. Ensure your mobile device are connected to 2.4GHz network before start the pair process. Disable 5GHz temporarily until pairing is completed.
D. Modem is too far away from the unit.	D. May need to use WiFi extender or AP for strong WiFi signal in range.
E. BrilliantSmart App requires update.	E. Check & install latest smart app update from the App store.
F. BrilliantSmart App not responding.	F. Remove/delete the app from the mobile device then re-install the smart app.
G. WiFi bandwidth not enough. Too many devices connected to the WiFi modem.	G. Standard modem usually allows connection of up to 10–15 devices. If too many devices are connected, we advise to upgrade the modem or use a WiFi MESH gateway/device.

Problem:

Device in the BrilliantSmart app shown Offline.

Possible Cause	Suggested Solution
A. No Internet access.	A. Ensure WiFi network is working and able to access internet connection.
B. Requires refresh to the BrilliantSmart app.	B. At home screen, pull down the screen to refresh the app. Or close the app and start again in your mobile device.
C. Smart device power turns on less than 1 minute.	C. When smart device power on it will take up to 1 to 2 minutes to connect to the cloud server. Wait at least 1 to 2 minutes and refresh the home screen.

For any other problems connecting your smart device to BrilliantSmart app please visit: www.brilliantsmart.com.au/faqs